



ME

LISBON

NEW OPENING

AUGUST 2025

WELCOME TO ME LISBON

The latest in
creativity,
manifested in a
luxury lifestyle
hotel experience



LOCATION



Located in **Marquês do Pombal** area, in a privileged setting by Parque Eduardo VII, ME Lisbon seamlessly blends with Avenida Liberdade's sophisticated and high-end allure, all while inspiring the local contemporary scene that surrounds it.

Lisboa



ROOM TYPOLOGIES

ALWAYS ME

SUPERIOR ME

EXTRA ME + WITH TERRACE

STUDIO ME+ SUITE

BEYOND ME + SUITE

ULTIMATE ME+ SUITE

213
ROOMS &
SUITES







FOOD & BEVERAGE



ELIA BAR
FISMULER
ATTIKO



THE MEDITERRANEAN ESSENCE
REPRESENTS MUCH MORE THAN A
SIMPLE NUTRITIONAL GUIDELINE

IT'S A LIFESTYLE

ME LISBON | ME BY MELIÁ



sunset
HOSPITALITY GROUP

Elia
lisbon
est. 2024

Designed to be shared in a casual and fun way. The seasonal gastronomic offering will be complemented by a **cocktail menu featuring Fismuler's signature infusions**, classic cocktails and a Portuguese wine list.





fismuler

Honest, artisanal cuisine with a focus on pure ingredients and fermentation. The dynamic menu includes staples like semi-cured sea bream and a famous three-cheese cheesecake, complemented by diverse drinks and daily live music.

attiko

ATTIKO is a sleek, high-energy lounge perfect for unwinding before a night out. Enjoy **sunset drinks with Pan Asian flavors** and seductive late-night revelry with electrifying DJ sets.



attiko



BroadwayMalyanSM

THE ROOFTOP & POOL

Our pool and rooftop bar enjoys spectacular views overlooking Lisbon's skyline.

A place with a **relaxed atmosphere** where you can enjoy Portugal's **excellent climate** while taking a dip in the pool and sipping a fine cocktail while relishing the impressive sunset.

13TH FLOOR



13TH FLOOR



WELLNESS & SPA

KORPO

Wellbeing is a lifestyle. For this reason, we want to offer you a tailor-made **holistic experience** signed by KORPO spa, combining ancestral techniques with latest state-of-the-art cosmetic techniques and organic elements.



MEETINGS & EVENTS

- 600M2 MEETING SPACE
- 11 ADAPTABLE ROOMS

Our outstanding location, our unbeatable gastronomic offer and the personalised attention of our team in organising meetings and social celebrations will exceed all your needs and ensure that your events you have in mind will be a success.



ARTISTIC CURATION BY GUTA MOURA GUEDES



ME LISBON | ME BY MELIÁ



Guta Moura Guedes is a Portuguese curator, artistic director and cultural manager. Inspired by the multicultural and cosmopolitan soul of Lisbon, Guta Moura imagines three artistic interventions in the hotel, created by local artists:

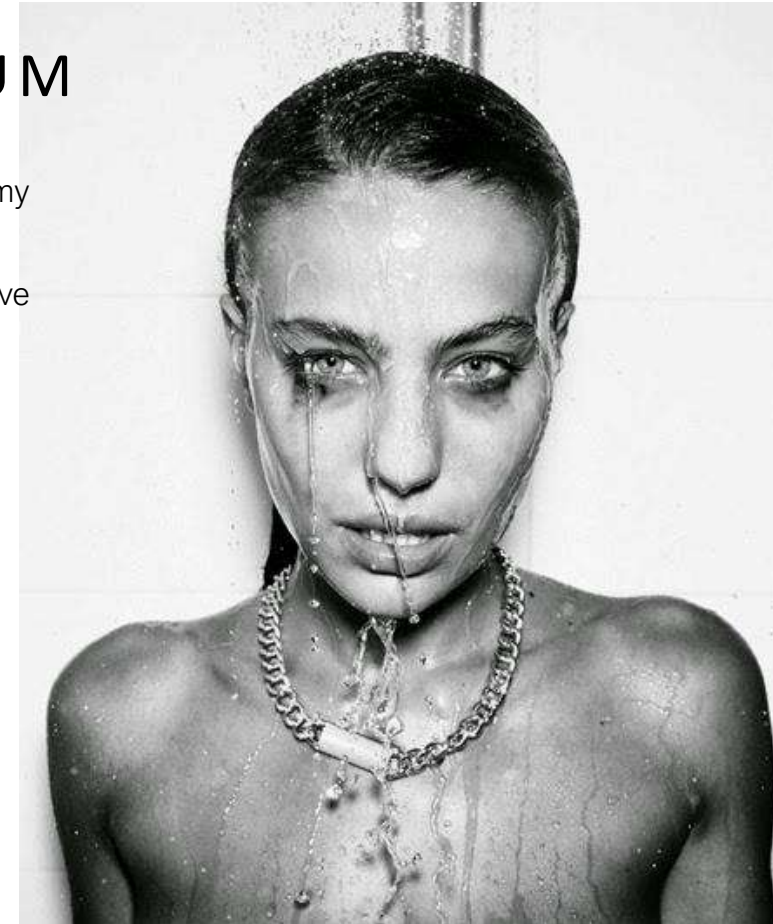
- Sculpture by Fernanda Fragateiro (Lobby)
- Painting by René Cruz (Floor -1)
- Immersive sound installation by Jorge Silva (Stairs)

ORIGINAL PHOTOGRAPHY BY

ALBERTO VAN STOKKUM

"I have to confess that it is a dream to be able to exhibit my photographs in a place created to accommodate beauty.

I want to thank the whole team at ME for the freedom they have given me at all times to work on this exciting project."



ME

LISBON

